



FEATURES

Context-relative displays. Create a display in which symbols represent assets in your Module Database, switch between modules at run time, dynamically change the symbol's data source, and review current data.

Integration with OSIsoft RtPortal. Save PI ProcessBook displays as Scalable Vector Graphics for RtPortal's Thin Clients – RtWebParts or RtPortal iViews – and even edit them directly from PI ProcessBook on a Microsoft SharePoint Server site.

XY Plot. Create a scatter plot to compare two or more tag values, show linear correlation lines, and include correlation coefficients.

Time zone settings. Set time to either server or client time to distinguish events or establish multiple trace trends in different time zones.

Layers. Build layered displays to group symbols logically, for example, by function or line of business.

Integration with the PI SDK. Use the PI Software Development Kit (SDK) to build advanced applications within PI ProcessBook.

Display Builder. Access a wide range of process display screens and drawing tools to ease the creation of process graphics and displays.

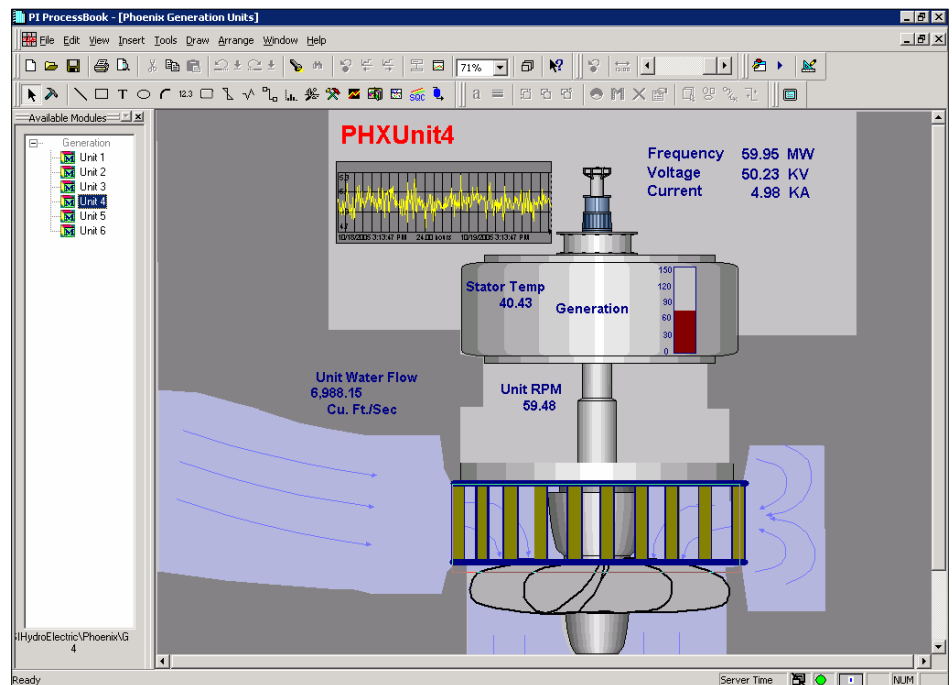
PI ProcessBook

Business Challenge

Manufacturing information and control systems produce a multitude of data that describe in detail almost any aspect of the way a process is performing. However, this wealth of information by itself is not necessarily meaningful and actionable. Manufacturing organizations need the ability to display process data in a way that makes its meaning clear, permits comparison and analysis, and offers a rapid response to events as they occur. Process owners should be able to create and modify data displays to their requirements easily and share them with stakeholders anywhere.

PI ProcessBook Overview

As the easy-to-use graphical display interface to the OSIsoft® PI System™, PI ProcessBook™ makes it possible to efficiently display real-time and historical data residing in the PI System and other sources. Process owners use PI ProcessBook to create interactive graphical displays that can be saved and shared with others. Users can quickly switch between view and build modes to create dynamic, interactive displays and populate them with live data. They also can write scripts that automate displays and trends by using Microsoft Visual Basic for Applications, which is seamlessly integrated into PI ProcessBook. OSIsoft also produces add-ins that perform SQC, Batch and other types of analyses.



PI ProcessBook displays can be used for summary or detailed drill-down views.



TECHNICAL COMPONENTS

Event triggers. Scripts respond to value changes in monitored variables to facilitate alarms, reposition cameras, show pop-up process displays, and more.

ActiveX Control container. PI ProcessBook enables process displays with live video, three-dimensional visuals, or other Microsoft ActiveX Control components, and allows controls to link to live process data.

Built-in Microsoft Visual Basic for Applications. With Visual Basic for Applications (VBA), users can write scripts to automate displays and trends, such as alarm scripts or flashing alarm indicators.

Access to ODBC data sources. PI ProcessBook can access all databases that use Microsoft Open Database Connectivity (ODBC), including SQL Server.

Compatibility with Microsoft Office applications. Users can paste PI ProcessBook display information into Microsoft Office applications such as Word documents or Outlook e-mail messages.

AF Modeler Add-In. The Analysis Framework (AF) Modeler Add-In for PI ProcessBook lets users integrate AF data into symbols and displays and build AF models that maintain the relationships of AF assets and organizational views.

Copyright © 2005 OSIsoft, Inc., all rights reserved. OSIsoft, the OSIsoft logo, the PI System, and PI ProcessBook are trademarks of OSIsoft, Inc. All other trademarks are the property of their respective owners.

Benefits

Immediate insight. View processes in real-time, compare with past events, and analyze process behavior, on any PC on the premises.

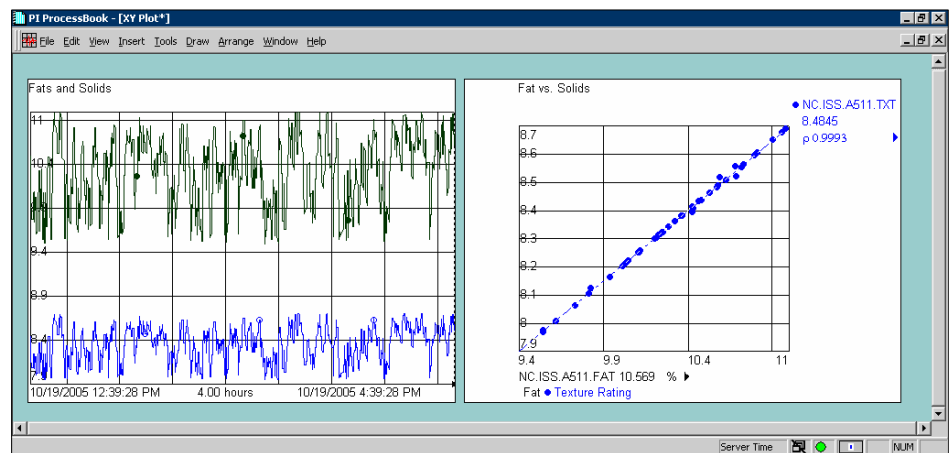
Increased process manageability. Monitor plant processes displayed in real time, quickly identify the source of process issues, and respond appropriately to critical values and events.

Meaningful, relevant information. Build displays that leverage structured metadata from the Module Database for increased process insight and display consolidation.

High-quality graphics. Create and view professional looking display screens, including scrolling trends and process graphics, and use PI ProcessBook's drawing and design tools to display data in the way you want to see them.

Flexible, close integration. Make PI ProcessBook displays available within Microsoft Office applications to process and publish them to thin client users in OSIsoft's RtWebParts or RtPortal iViews.

Unlimited availability. Use PI ProcessBook together with PI ActiveView to make displays available to authorized viewers anywhere an Internet connection is available, but full VBA or ActiveX functionality is required.



An XY Plot enables users to correlate data.

About OSIsoft

OSIsoft delivers performance management software to the world's leading process manufacturing, life sciences, and utility companies—anywhere real-time operational metrics fuel performance. With more than 10,000 installations worldwide, OSIsoft's real-time data platform crosses IT and process boundaries to incorporate and display operational information. Providing comprehensive visibility into operations, the OSIsoft platform unlocks the potential for timely analysis and the ability to make critical, informed, and profitable decisions.

For more information about PI ProcessBook and other products from OSIsoft, please visit our Web site at www.osisoft.com or call us at (01) 510-297-5800, option 2.



OSIsoft www.osisoft.com

OSIsoft, Inc. 777 Davis Street Suite 250 San Leandro, CA 94577